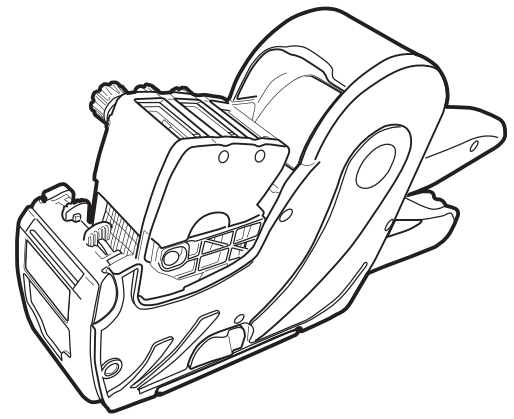


# maxill steri-sox ID<sup>+</sup>™

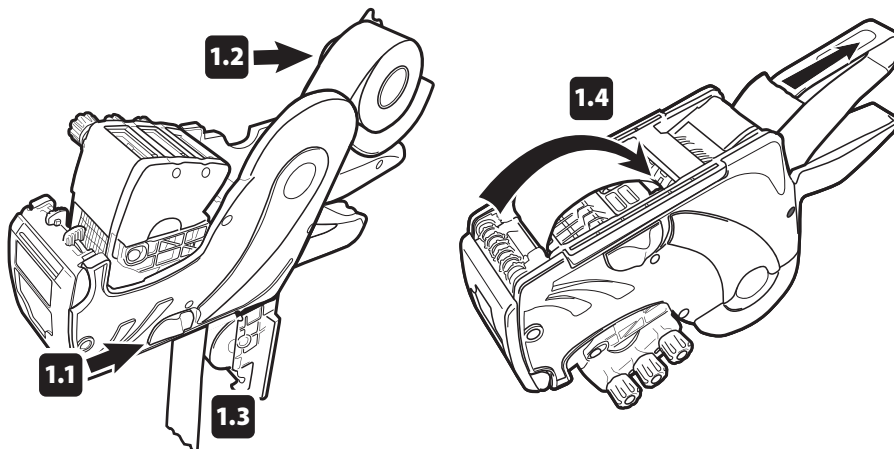
## QUICK LABEL SYSTEM INSTRUMENT REPROCESSING LABELER Instructions For Use



### Loading Labels

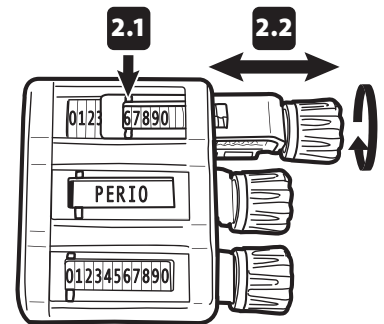
**To load the label roll:** Open the baseplate by sliding the two plastic grips, one on each side of the body of the machine (1.1). The baseplate will fall open automatically. Open the label roll holder (1.2) by pulling it upwards slightly. Place the label roll into the label roll holder so that the roll unwinds towards the front of the machine from the top (1.2). Unroll a strip of 8 labels and peel them off. Insert the strip into the top of the machine, guiding the strip gently until it comes out of the bottom. Close the label roll holder.

**To insert the label strip:** Before closing the baseplate, make sure the peeled off strip is left free outside of the body of the labeler (1.3). Insert the loose end of the label roll into the slot behind the roller and push it slightly (1.4). Repeatedly pull the handle until you see that the label is correctly printed.



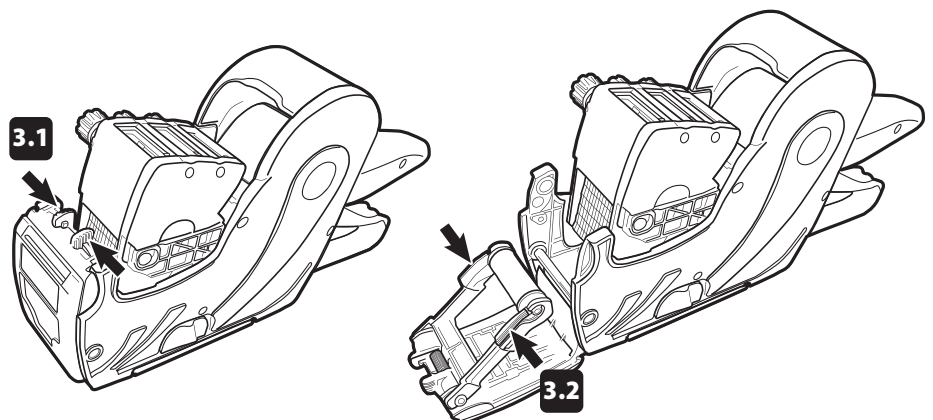
### Setting Print Characters

Move the selection indicator on the display (2.1) to the required position by pulling the setting knob out gently (2.2). Turn the setting knob until the required figure for that column appears on the display. Return the setting knob to its original position by pushing it towards the machine. Use the centre dial to indicate the contents of the sterilization package. If no content indication is required, a blank space can be selected.



### Changing The Ink Roller

**To change the ink roller:** Open the ink roller holder by squeezing the latch grips together (3.1) and pulling away from the body of the labeler. Remove the ink roller by squeezing the roller tabs (3.2) and rotating the roller upwards. Replace the ink roller making sure that the new roller tabs click into place.



#### Special Instructions

For best adhesion, apply label to the autoclave tape when using sterilization wrap.